

Serie 48 Xtrem

Industrial floodlight for lighting indoor and outdoor infrastructures in extreme environments

SILL



Serie 48 Xtrem

Industrial floodlight for lighting indoor and outdoor infrastructures in extreme environments

SILL



Lighting fitted in large open industrial areas must be precise, long-lasting and reliable. SILL48 Xtrem floodlights are designed for the toughest environments, with their corrosion-proof IP65 one-piece design and ultra-sturdy electronics. These luminaires are guaranteed for intensive use at high temperatures of up to 50°C. The precision beams ensure uniform lighting even from the highest masts. Improve your lighting to ensure extra safety in all your industrial applications, whether indoors or outdoors.

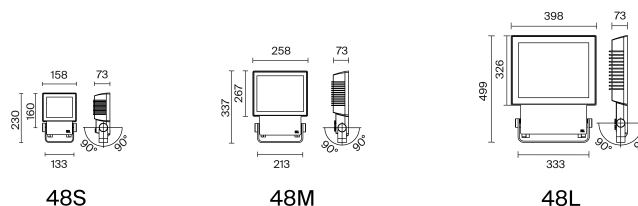




Serie 48 Xtrem

Industrial floodlight for lighting indoor and outdoor infrastructures in extreme environments

SILL



48S

48M

48L

Black version with tempered glass

CRI70, 4000K, anti-corrosion treatment. 100 000 h L80B10 @Tmax. 8 years warranty on request.



Size	Watt	Beam angle	Flux (lm)**	T max	Designation	Code
S48S 28		Asymmetric deep - lmax 67°	1840	50°C	48S 1-3k 740 D AS125-67 BK-C	S48S0046
		Asymmetric batwing - lmax 23°	1770		48S 1-3k 740 D AS120-23 BK-C	S48S0047
		Wide Beam 65°	2250		48S 1-3k 740 D WB65 BK-C	S48S0048
S48M 80		Asymmetric deep - lmax 67°	7360	50°C	48M 6-9k 740 D AS125-67 BK-C	S48M0077
		Asymmetric batwing - lmax 23°	9130		48M 6-9k 740 D AS120-23 BK-C	S48M0019
		Wide Beam 65°	8430		48M 6-9k 740 D WB65 BK-C	S48M0020
S48L 120		Asymmetric deep - lmax 67°	14780	50°C	48L 8-16k 740 D AS125-67 BK-C	S48L0203
		Asymmetric batwing - lmax 23°	14970		48L 8-16k 740 D AS120-23 BK-C	S48L0025
		Wide Beam 65°	16670		48L 8-16k 740 D WB65 BK-C	S48L0026
	160	Asymmetric deep - lmax 67°	18120	45°C	48L 12-21k 740 D AS125-67 BK-C	S48L0125
		Asymmetric batwing - lmax 23°	18350		48L 12-21k 740 D AS120-23 BK-C	S48L0190
		Wide Beam 65°	20440		48L 12-21k 740 D WB65 BK-C	S48L0152

** Light output. These products are ideal when converting conventional 50W, 150W, 250W and 400W sodium or metal halide floodlights on a 1 for 1 basis.

White version with polycarbonate glass

CRI80, 5700K, anti-corrosion treatment, ideal for food-grade use. 100 000 h L80B10 @Tmax. 8 years warranty on request.

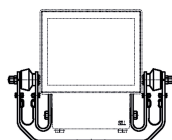


Size	Watt	Beam angle	Flux (lm)**	T max	Designation	Code
S48S 28		Asymmetric deep - lmax 67°	1680	50°C	48S 1-3k 857 D AS125-67 WH-C PC	S48S0049
		Asymmetric batwing - lmax 23°	2120		48S 1-3k 857 D AS120-23 WH-C PC	S48S0050
		Wide Beam 65°	2710		48S 1-3k 857 D WB65 WH-C PC	S48S0051
S48M 80		Asymmetric deep - lmax 67°	6710	50°C	48M 6-9k 857 D AS125-67 WH-C PC	S48M0124
		Asymmetric batwing - lmax 23°	8320		48M 6-9k 857 D AS120-23 WH-C PC	S48M0025
		Wide Beam 65°	7680		48M 6-9k 857 D WB65 WH-C PC	S48M0026
S48L 120		Asymmetric deep - lmax 67°	13620	50°C	48L 8-16k 857 D AS125-67 WH-C PC	S48L0141
		Asymmetric batwing - lmax 23°	13800		48L 8-16k 857 D AS120-23 WH-C PC	S48L0031
		Wide Beam 65°	15370		48L 8-16k 857 D WB65 WH-C PC	S48L0032
	160	Asymmetric deep - lmax 67°	16640	45°C	48L 12-21k 857 D AS125-67 WH-C PC	S48L0155
		Asymmetric batwing - lmax 23°	16860		48L 12-21k 857 D AS120-23 WH-C PC	S48L0156
		Wide Beam 65°	18770		48L 12-21k 857 D WB65 WH-C PC	S48L0205

** Light output. These products are ideal for spaces requiring very high quality lighting (inspection, painting or food processing areas).

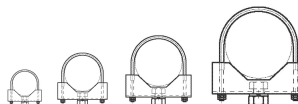
Accessories

To be ordered separately



Anti-vibration mount

For 48S model 849S01000
For 48M model 849M01000
For 48L model 849L01000
Supplied with safety chain



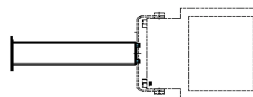
Mast clamp

For mast ø55-60mm 855500200-60
For mast ø60-89mm 855500200-89
For mast ø115-120mm 855500200-120
For mast ø150-170mm 855500200-170



Adjustable slats

Vertical blades, for 48S model 849S00400
Vertical blades, for 48M model 849M00400
Vertical blades, for 48L model 849L00400
Horizontal blades, for 48S model 849S00300
Horizontal blades, for 48M model 849M00300
Horizontal blades, for 48L model 849L00300



Remote wall-mounted support, 500 mm

For 48S and 48M models 849000500
For 48L model 849400500



Serie 48 Xtrem

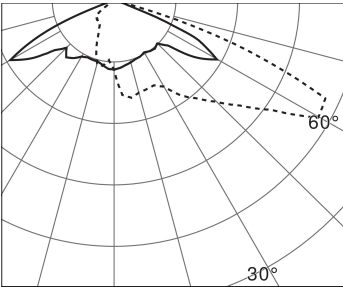
Industrial floodlight for lighting indoor and outdoor infrastructures in extreme environments

SILL

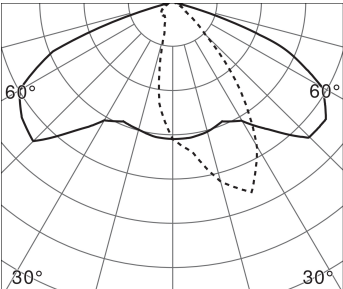
Specification



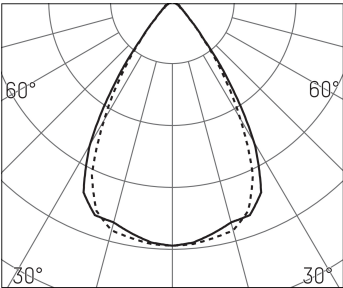
Photometry



Deep asymmetric light distribution (AS125-67)



Batwing asymmetric light distribution (AS120-23)



Wide flood 65° (WB65)

For other beams requests, please contact us

Technical characteristics

Light source	High-efficiency LED module 4000K and 5700K (also available in 2700K, 3000K, amber) CRI > 70 and CRI > 80 SDCM < 3 100 000 h L80/B10 at max. operating temperature
Optics	High-performance lenses for ultra-uniform lighting ULR : 0 %
Lighting comfort	UGR ≤ 22 (WB65 version) Various optical accessories are available on request (louvres, honeycomb grid, etc.).
Heat management	Automatic light regulation in case of overheating
Control gear	1 integrated special industry electronic driver, DALI-addressable, flicker free Supports voltage spikes up to 8kV (except 48S : 2kV and 48M : 6kV)
Supply voltage	220-240V 0/50/60Hz
Electrical class	Class I
Operating temperature	-40°C to +50°C (except 28W : -25°C to +50°C and 160W : -40°C to +45°C)

Easy intallation and maintenance

Connection	48S : 1 cable gland M16 (capacity: Ø 8 to 12 mm) 48M, 48L : 2 cable glands M20 (capacity: Ø 8 to 12 mm) To a 2 x 5 x 2,5 mm² fixed double deck terminal block (except 48S : single deck terminal block)
Mounting	Wall and ceiling holder (accessories for securing the luminaires to a bracket or mast) Swivel range ± 90°
Maintenance	Easily removable LED modules and driver
Weight	48S : 2,8kg / 48M : 5,2kg / 48L : 14,4kg
Wind-attack-area	48S : 0,031 m² / 48M : 0,076 m² / 48L : 0,17 m²

Materials

Protective cover	Tempered safety glass or translucent pc-cover, thickness 4mm, UV coated
Body	Very high mechanical, chemical and corrosion resistances High pressure die cast aluminium one piece housing (AlSi12, with low copper rate) Special pretreatment for increased and long-lasting corrosion protection in chlorinated and saline environments Different paintwork for each version : black RAL 9005 or white RAL 9010

Standards

Compliance	Manufactured according to DIN VDE 0711 / EN 60598, CE
Waterproofness	IP65
Resistance to IK shocks	48S : IK09 48M : IK08 48L : IK09